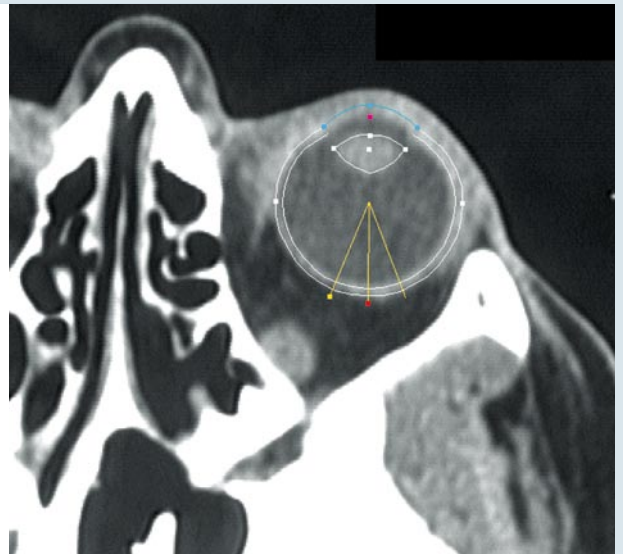
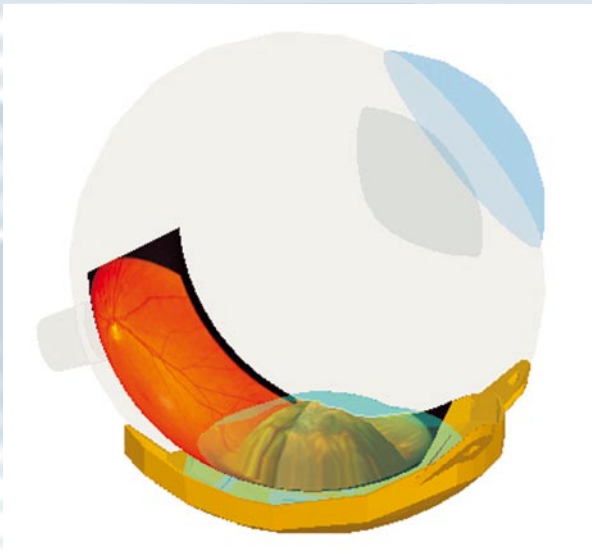


Plaque Simulator

Product Information



- Interactive 3D treatment simulation
- For IBt Bebig Ru-106 plaques, I-125, Pd-103 and Ir-192 plaques
- Creates precise 3D and 2D models of both eye and tumor
- Optionally works with CT and/or MR images, fundus camera photographs and ultrasound studies
- Isodose calculation and display in 3D and 2D
- Regular updates available

■ Application

Plaque Simulator is a 3D treatment simulation and modeling package for Ru-106, I-125, Pd-103 and Ir-192 plaque therapy of ocular tumors and macular degeneration.

■ General Information

IBt Bebig Plaque Simulator is the substantially enhanced and updated commercial adaptation of the interactive three dimensional treatment planning system for ophthalmic plaque radiotherapy developed by Melvin Astrahan and others at the University of Southern California School of Medicine. It has seen continuous clinical use since 1989. It supports the isotopes Ru-106, I-125, Pd-103 and Ir-192.

Plaque Simulator optionally uses measurements derived from CT and/or MR images, fundus camera photographs and ultrasound studies to build visually realistic and spatially precise three dimensional models of the patient's eye and tumor. Plaque Simulator comes with detailed "ready-to-go" 3D models of all plaques manufactured by IBt Bebig, including Ru-106 applicators and COMS plaques.

Plaque Simulator calculates and graphically displays physical parameters including suture eyelet location, distance from anatomic landmarks and dosimetric parameters such as radiation collimation, dose rate, dose volume, isodose lines and isodose surfaces. The software allows you to simulate the treatment process down to the finest details, resulting in fast surgery and highly conformal dose distributions.

Plaque Simulator is well suited to support most administrative tasks and documentation requirements and is currently the dosimetry simulation program most widely used among ophthalmic oncologists worldwide.

Plaque Simulator

■ Hardware Requirements

The current version 5 of Plaque Simulator is intended for an Apple PowerMac or PowerBook G4 or G5 running MacOSX 10.3 (Panther), alternatively G3 oder G4 MacOS 9.2. At least 256 MB RAM are needed, 512 MB RAM or greater are recommended.

Plaque Simulator will also run on most older MacOS compatible computers, please inquire regarding further details.

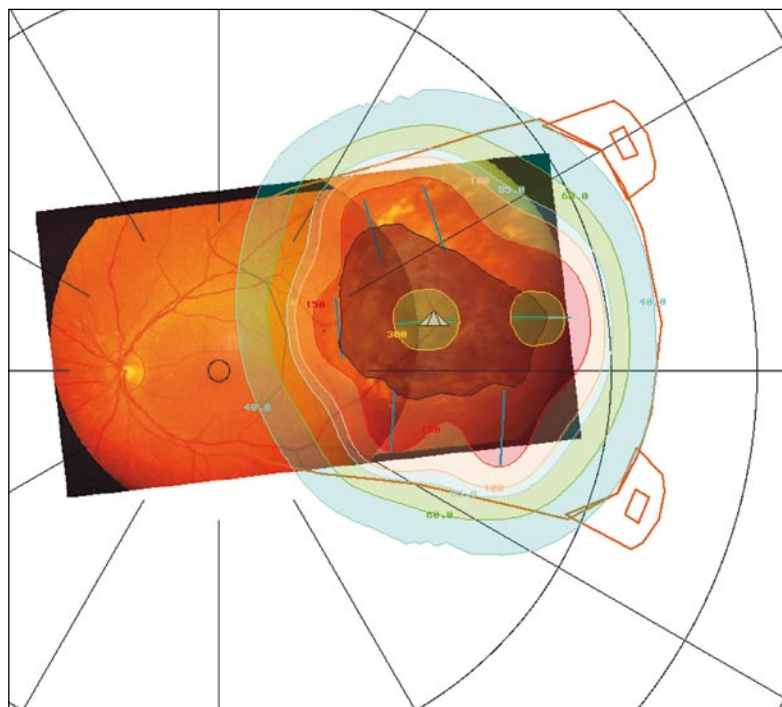
■ Download of Demo Versions

<http://radonc.usc.edu/USCRadOnc/Downloadable/plaquesimulator.html>

Plaque Simulator Order no.:
BPS-PLAQUE SIM.

Please note: The Plaque Simulator is not a treatment planning software. It is not CE certified and therefore not for clinical use. The software is intended for demonstration of the treatment only. All calculations for dosage etc. have to be confirmed by the physicist. Its use does not relieve physicists or dosimetrists from any of their responsibilities or liabilities.

The information given above is not sufficient for safe handling of the product. For more detailed information please refer to the instructions for use.



IBt Bebig

Belgium

Zone Industrielle C
7180 Seneffe
Telephone +32 (0) 64 52 08 20
Telefax +32 (0) 64 52 08 21

Germany

Robert-Rössle-Strasse 10
13125 Berlin
Telephone +49 (0) 30 94 10 84-130
Telefax +49 (0) 30 94 10 84-112

info@ibt-bebig.eu
www.ibt-bebig.eu